

SCHOOL OF ARCHITECTURE

Newsletter 2022

Showcasing the steps taken by SOA in the year 2022 for holistic learning



SOA bringing together WUD to celebrate World Architecture Day (top left) Sketch showing the relationship of humans with the built form (top right) On-campus Brick workshop (bottom right)



The theme for World Architecture Day 2022 was Architecture for well-being. The theme is in line with the designation of 2022 as the Year of Design for Health and the need to use evidence-based design to promote health in buildings and cities.

Health, as defined by the World Health Organization (WHO), is "a state of complete physical, mental and social well-being and not merely the absence of disease or infirmity," and "the enjoyment of the highest attainable standard of health is one of the fundamental rights of every human being without distinction of race, religion, political belief, economic or social condition" (WHO, n.d.).

SOA, celebrated **World Architecture Day** on 3rd October 2022 and had an open discussion about evidence-based design to **promote health in buildings and cities.**

+

To respond to recent global public health crises including the COVID-19 pandemic and other devastating disasters, the theme was selected. The students were encouraged use design interventions that promote health and hygiene.

"Design that protects health, design that develops Better Health, and design that restores health once it is impaired."

Keeping in mind that the built environment has an impact on the health of the people who experience it, Design for health and well-being should be a fundamental component embedded in every project, for every practice, and at any scale, which was emphasized and demonstrated on World Architecture Day.

Promoting Health in Buildings and Cities

CELEBRATING ARCHITECTURE





To encourage an **interdisciplinary learning environment**, SOA teamed up with SOPA to put forward a workshop on the interrelationship of **performing arts and space**

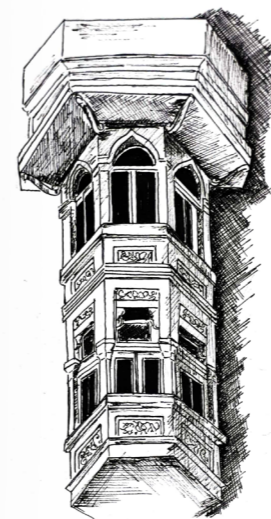


The first day of the Performing Arts and Architecture workshop started with a presentation on Chaturangana Art by Shinjita and Vidhya. They showcased their works on the projects of Khirki Masjid and Mitawali ; the projects highlighted the adaptive reuse of the space in addition to preservation and rehabilitation. The students were asked to map spaces in their campus and record their experiences through audio and drawing. They were also asked to assign audios to the zones of the site for a more dynamic experience. The second day started with site specific performance at Mehrauli Archaeological Park, Delhi. The students architecturally mapped the movements within the site which involved knowledge of Raags and inculcation of 16 taals. The third day of the workshop was on the campus where the students were involved in movement related exercises and were asked to create a storyline connected to the site. The fourth day was again site specific with the students documenting the site in detail and analyzing the same. They were asked to suggest architectural interventions for the issues analyzed by them for the site.

The five day long workshop concluded with the students recreating the experience of the site in their studio and enacting a play reciprocating their experience of the space.

Interdisciplinary Workshop

PERFORMANCE INTERTWINED WITH SPACE



Students performing at IHC (Top Left) Shinjita Roy and Vidya Gopal in an open discussion with the students (Top Right) Sketch highlighting the architectural language (Bottom Right) Shinjita Roy giving a hands-on workshop to the students (Bottom Right)





Contextual Study

DELayerING THE RURAL FABRIC

SOA Foundation students interacting with the Rabaris (Left) Sketch highlighting the living conditions (Top Right) Students documenting lifestyle (Centre Right) Temporary shelter units of the Rabaris (Bottom Right)



+

The students **studied the people**, their culture, food, clothing, social setup, history, and economic conditions to **propose holistic design solutions.**

To study the emergence of spontaneous settlements, the SOA foundation undertook the primary documentation of Rabari, famously known as the 'Gypsy tribe of India'.

The aim of the study was to 'design for the people'. The design process involved the interaction of the students with the people and their space and to understand and propose architectural interventions.



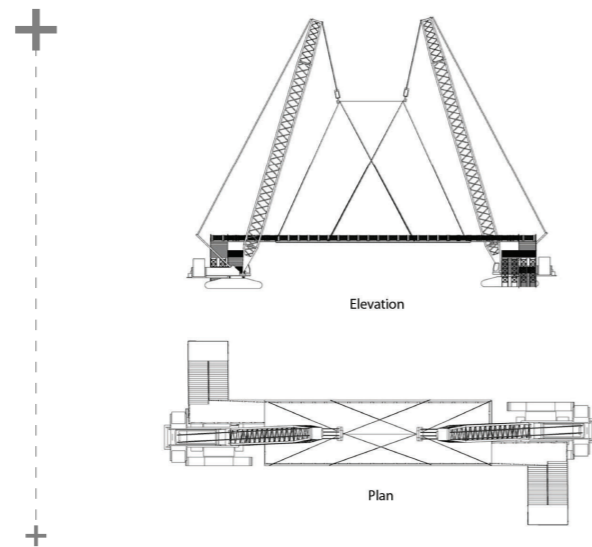
RISE, RESIST, REMEMBER



Students working on the design model for the competition (Top Left) Drawing highlighting the design intent (Bottom Right)

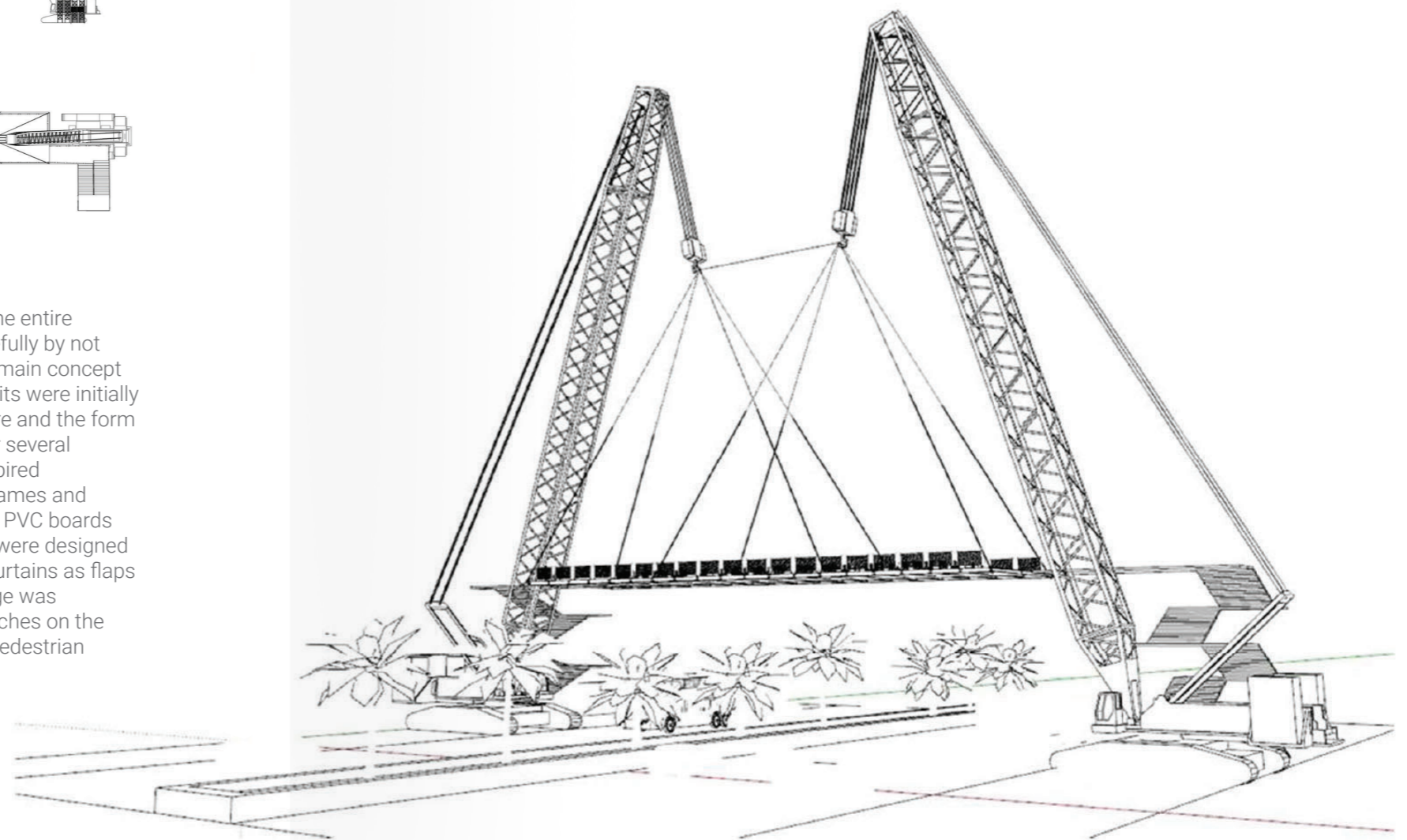
The students from SOA participated in an **international design competition** organized by UNI.

Protest deal with psychology along with physical phenomena. Temporariness and flexibility are the tools to design protest spaces. An architect plays a crucial role in providing them shelters and in defining their spaces by making the structures climate responsive and molding the form in ways to make them noticeable by the public and thus helping in the agenda of the protest. The challenge was to create a Utopian design for protest. Under the rise category of the competition, a temporary settlement for occupation by 10,000 protesters had to be designed. The site was chosen by the students on GT road (NH-1) due to its administrative and historical importance. The students selected the



patch after conducting a reiki of the entire stretch. The right to protest peacefully by not hindering the traffic has been the main concept for the evolution of the design. Units were initially designed as a convertible structure and the form was inspired by an umbrella. After several explorations the idea of cargo inspired temporary structures with steel frames and paper tubes sandwiched between PVC boards were used. Congregation spaces were designed using bamboo frames, bamboo curtains as flaps and tensile fabric as roofs. A bridge was designed to connect the two stretches on the roads and to avoid hindrance by pedestrian movement.

"It was a good effort by the SOA students"
- Ar. Iftikar Mulk Chisti (Organizing committee, UNI)

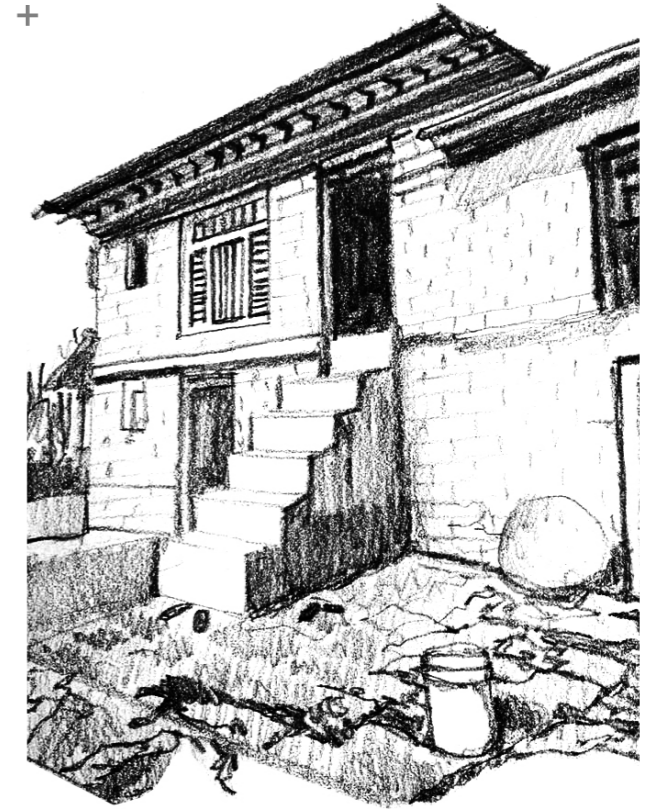


Contextual Study

JAGESHWAR KI STUDY



Students blending-in with a twist (Left) Dean and the students at Jageshwar Dham (Centre) Sketch highlighting the settlement language (Top Right)



In an attempt to decode the **urban morphology of the settlement**, SOA students went on an excursion to **Jageshwar Dham, Almora**

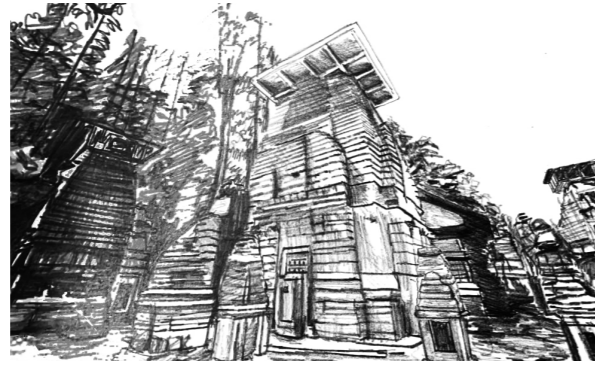
The School of Architecture (SOA) of WUD went on a field trip to Shiva's own town- Jageshwar Dham, Almora. This excursion in the valley of temples was for 6 days, from 31st October 2022 to 5th November 2022. It comprised 49 students, 2 faculty and the dean. Pre- field works; including socio-economic research, contour study, getting research permission from INTACH, etc; were done well before time by the students and faculty.

After reaching the trip site, the students formed three groups, each having about 15 students. Tasks were assigned to every group and the progress was checked each evening.

Group-1 measured the roads, slopes, houses and in-turn drafted the respective drawings. They carried out the contour study and made the cluster plans as well.

Group-2 studied the area's morphology and learnt about the architecture of the Kumaon region. They further investigated the vibrant color palette used in the houses and figured out how the construction materials are brought to the site in such a mountainous region.

Group-3 students carried out the socio-economic study and explored their daily routine, art and craft, dance and music, festivals, attire, the basic amenities and services of the town and so forth.



Thereafter, they collectively examined the temple site. They studied its history, timeline, architectural style, materials, and its significance to the people of Jageshwar and the surroundings. On the last day, the students and the faculty celebrated Diwali with the Kumaon people.

morphology of the settlement, how, in the past, the temple complex acted as the main agent in drawing people and how it has, now, become the driving force of the town. The study also involved creation of possible nalli maps and figuring out how the town must have evolved. Surveying, measuring and mapping in the sloppy terrain were also done by the students along with interacting and documenting the local lifestyle.

The aim of the study was to decode the urban



Sketch of the temple complex (Top Left) Students interacting with the locals (Centre Left) The students and faculty creating an action plan for the study (Bottom Left) Layout highlighting Jageshwar temple complex with the surrounding settlement (Right)

- + Visit to Wadia Institute of Himalayan Geology to experience climate responses architecture and explore earth's geological history.

Established in June, 1968 as a small nucleus in the Geology Department, Delhi University, the Institute was shifted to Dehradun during April, 1976. Wadia Institute of Himalayan Geology, Dehradun is an autonomous research institute of the Department of the Science & Technology, Ministry of Science and Technology, Govt. of India. Students learnt about the climate responsiveness of the building along with the materials incorporated. They also studied about the interior of museum spaces during the visit.

Learning from Site Visits

THROUGH THE HILLS



Visiting Wadia Institute of Himalayan Geology and FRI, World's **biggest and purely brick structure of its time** and now a National Heritage Site +

Visit to FRI, World's biggest and purely brick structure of its time and now a National Heritage Site.

FRI is the oldest building of its kind with its unique architecture. Built over a lush green estate spread over 450 hectares, the institute's main building is an impressive edifice marrying Greco Roman and Colonial styles of architecture. Students experienced old colonial time buildings and gained material knowledge in the campus which included bungalows/Residences of that time. Lime and Brick was the major material used in the campus. They also learnt about the climate responsive design of the building.



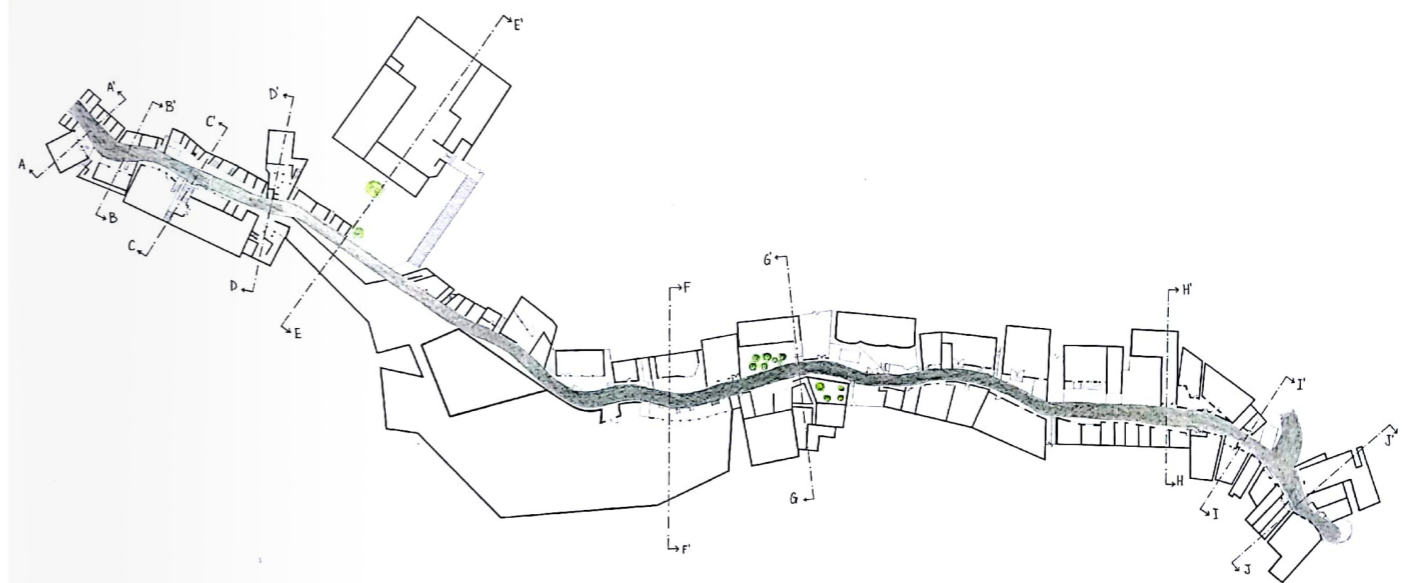
SOA at Wadia Institute of Himalayan Geology. (Bottom Left) FRI, World's biggest and purely brick structure of its time (Centre) Students at FRI (Top Right)

Documentation of
Mcleodganj done by SOA
 students got **published in**
INTACH's heritage awards
 publication



Documentation & Publication

DOCUMENTING HERITAGE



Mcleodganj is a suburb of Dharamshala in Kangra district of Himachal Pradesh, India. It is known as "Little Lhasa" or "Dhasa" because of its large population of Tibetans. It is 6 km away from Dharamshala, which is recently declared as the second capital of Himachal Pradesh. Study of Mcleodganj was the first exercise of WUD School of Architecture under Urban Morphology. The aim was to study the spatial structure and character of the town by examining the patterns of its components and the process of its development. The study of physical form.





Vandana Baweja gave a guest lecture at SOA wherein she discussed the architecture and urbanism of Bombay as displayed in the Oscar winning movie Slumdog millionaire. She discussed how the film depicts the transformation of Bombay to Mumbai and showcases three urban architectural spaces invested with ideological meaning



Nidhi Dandona in a lecture about Urban Design (Bottom Left) Vandana Baweja discussing architecture and urbanism of Bombay displayed in Slumdog Millionaire (Centre) Bidisha Sinha and the Dean having a discussion with the students (Bottom Right)



Nidhi Dandona is an architect and an urban designer with M. Arch from SPA, Delhi. She has played a vital role in initiating the programme and making it one of the best urban design schools in India. She is the Secretary of the IUDI DNCR Centre. She was one of the directors at Ram Dandona & Associates supervising design and urban conservation projects.

Guest Lectures

LEARNING FROM THE EXPERTS



Lorem ipsum dolor sit amet, consectetur adipiscing elit. **Quisque interdum, nisi non** gravida lacinia, risus turpis luctus ante, sed viverra felis ex at



In an interactive session with **Bidisha Sinha**, the students of SOA had the opportunity to witness the design ideology of Zaha Hadid architects and their projects.

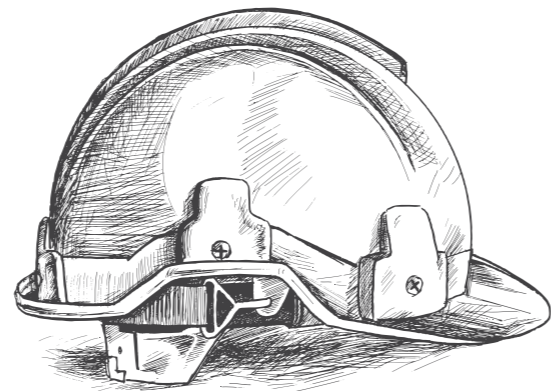
Zaha Hadid architects is a pritzker winning design firm with its base office in London, UK.

Material Study

UNDERSTANDING THE MATERIALS



SOA students understanding the process of brick manufacturing (Left)
Students at Ply manufacturing Unit, Yamunanagar (Top Right) Students at Brick Kiln (Bottom Right)



On 16th June students from School of Architecture accompanied by faculty members visited the ply manufacturing unit at Yamunanagar. There students got to understand the complete process of ply, block board and flush doors manufacturing.

Exploring building materials and construction practices with the help of on-site **visits to brick kiln and ply manufacturing unit** in Yamunanagar



Foundation students of SOA visited a Brick Kiln in Sonipat to understand the manufacturing process of the building materials.

The students tried their hands on making bricks with the workers of brick kiln. They were also taken on a tour of the entire site to show the process of brick making



SOA students attended **FOAID, MATECIA and D-arc Build in 2022** to gain exposure and knowledge in the field of building innovations, technology, building materials, and interior designing.



Foundation students at FOAID (Left)
Students at MATECIA (Centre)
Students at D-Arch Build 2022

Conventions & Exhibitions

THE OUTLOOK

+ Broadening up the horizon by providing **market exposure to the students**

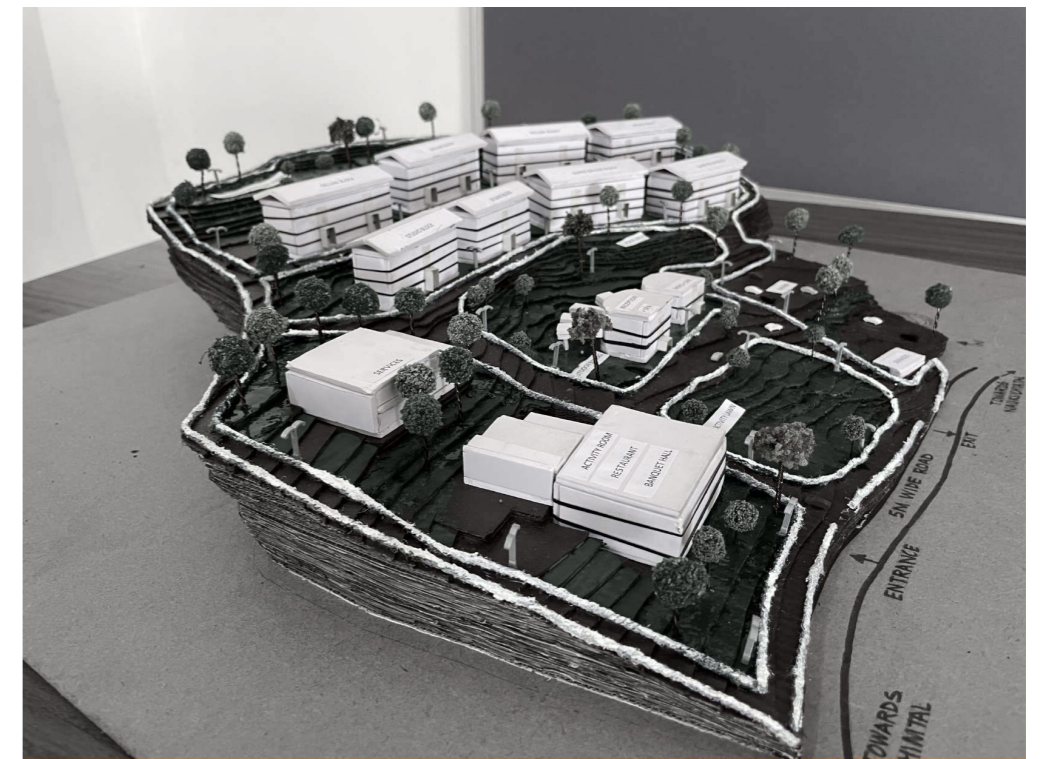


Undergraduate Thesis

THE FINAL COUNTDOWN

SOA students demonstrating the **skills and the knowledge they have learnt and developed** over the course of studies through thesis.

SOA students worked on their architecture thesis at the end of the course; It is design exercise that signifies the knowledge and skills acquired during the undergraduate study. The work done was appreciated by the field experts who conducted the jury.



Model of Sarayu Riverfront Development project (Left) Students in a jury session with the faculty in field experts (Centre) Model of Biophilic Home Resort Project (Right)

Placements, Internships and Testimonials

STUDENTS MAKING A MARK

SOA students getting into the field with a bang by bagging **placements and internship in top architectural firms**

SOA students interned and placed at renowned architecture and planning offices both government and private including INTACH, Hafeez contractors, Axiom, Kothari & Associates, Studio Lotus, etc. Other than that, there were students that opted for higher studies for specialization at top tier universities.



+



Saloni Agarwal
5th year SOA student

"My experience at SOA has been innovative, always challenging, and has taught me new things every day. This has aided in my early development of professionalism."



Isha Ralhan
5th year SOA student

"Being here at SOA has allowed me to grow into a more confident human being. It has allowed me to explore the extents of creativity and design."



Gunjan Grover
5th year SOA student

"The facilities at our college are excellent and bring out the best in each of us. The welcoming atmosphere, helpful seniors, and committed lecturers give architecture students the confidence that they have chosen the ideal college for their bachelor's degree."



**Architect
Hafeez
Contractor**



Kothari & Associates



AXIOM INDIA

studiolotus™




**WORLD UNIVERSITY
OF DESIGN**

I am very happy to forward the latest newsletter of the School of Architecture at WUD giving valuable insights of their vision and futuristic pedagogy. For a young school that has got just one batch out, SoA has managed to absorb the onslaught of digital technologies that are revolutionising the way architecture is perceived and practised. All our graduates are well-versed with not only the required skills to look at projects with a contextual vision and use the new-tech tools to arrive at innovative solutions. No wonder they are getting outstanding placements and leaving a mark among the peers




Dr. Sanjay Gupta
Vice Chancellor, WUD

Follow US

 /worlduniversityofdesign
 /wud_official

World University of Design

Plot No. 1, Rajiv Gandhi Education City, Sonapat, Haryana
131029, Delhi-NCR, India

 7056770061/ 65
 7056770065
 info@wud.ac.in
 www.wud.ac.in
